

# CERTIFICATE OF LOCATION OF GOVERNMENT CORNER

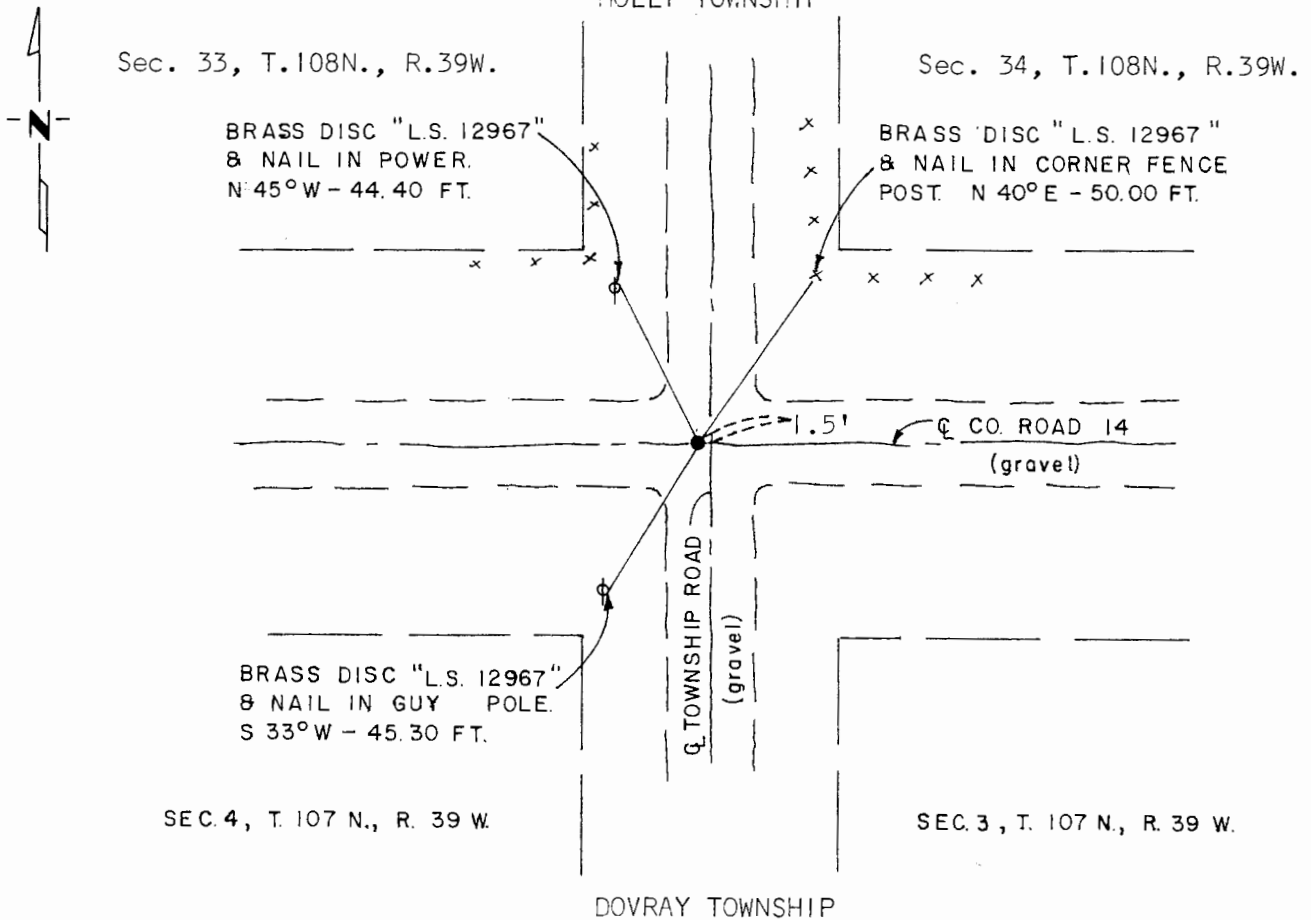
Northwest Corner of Section 3, Township 107 N., Range 39 W., 5th P.M.

STATE OF MINNESOTA, County of Murray

At the corner location shown on the sketch:

- On Oct. 9, 1980 found a concrete monument per sketch below.  
DATE
- left monument as found,  lowered monument,  removed monument (explain)
- On Oct. 9, 1980 placed a 1/2" iron reinforcing bar set with "L.S. 12967" cap over  
DATE said concrete monument.

### SKETCH OF REFERENCE TIES HOLLY TOWNSHIP



I hereby certify that this document and the data contained herein was prepared by me or under my direct supervision.

*Ally D. Apat*  
SIGNATURE

12/23/81  
DATE

Registration No. 12967

Land Surveyor,  Professional Engineer

County Surveyor,  County Engineer

**OFFICE OF THE COUNTY RECORDER**

County of Murray

I hereby certify that this document was filed in the Co. Recorders office at 10 A.M. on the 18th day of February A.D., 19 82

County Recorder *Willard W. Chme*

By \_\_\_\_\_, Deputy

DOCUMENT NO. \_\_\_\_\_